



PROSHELL KL ALL is a cove-shaped profile in polished and chromed brass and anodized and polished aluminium. The profile allows to connect the floor and wall coverings in ceramic and mosaic also with low thickness. It is particularly suitable to ensure cleanliness and hygiene in every kind of environment where good resistance to mechanical and chemical stresses are required. Its particular section and availability in five different finishes, make **PROSHELL KL ALL** a much sought after profile.

PRINTER KL ALL

POLISHED AND CHROMED BRASS AND ANODIZED AND POLISHED ALUMINIUM

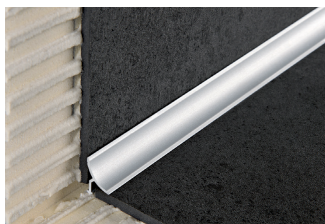


POLISHED / CHROMED BRASS thermo packed
bar length 2,7 lm - pack. 40 Pcs - 108 lm

Article	H mm
PIKLOL 045 (polished)	4,5
PIKLOC 045 (chromed)	4,5

CAPS

Article
TPIKL ...

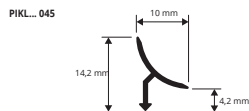


POLISHED CHROME ALUMINIUM / GOLD thermo packed
bar length 2,7 lm - pack. 40 Pcs - 108 lm

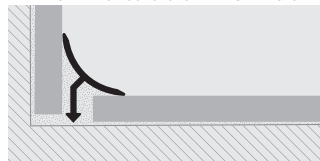
Article	H mm
PIKLBC 045	4,5
PIKLBO 045	4,5

ANODISED SILVER ALUMINIUM thermo packed
bar length 2,7 lm - pack. 40 Pcs - 108 lm

Article	H mm
PIKLA 045	4,5



EXAMPLES AND INSTRUCTIONS FOR LAYING METHODS



1. Choose "PRINTER KL ALL" according to the desired finish. 2. Cut "PRINTER KL ALL" to the desired length. 3. Apply the silicone along the floor-wall connection. 4. Press the arrowhead of "PRINTER KL ALL" into the silicone evenly until it is completely adherent to the floor and wall.

profiles for low thicknesses



News 2017

COLOURS



PROTERMSTEP ACC is a profile for stair in polished and satin finish stainless steel AISI 304/1.4301-V2A. The profile protects the tread and cover the joint between the tread and the riser of the step. It can also be used overturned and for this reason it is suitable for two different tile thickness. Its particular geometry and the availability of two finishes and different heights make **PROTERMSTEP ACC** suitable for every kind of stair with ceramic, terracotta floorings, wood and natural stone coverings.

PROTERMSTEP ACC

POLISHED AND SATIN FINISH STAINLESS STEEL AISI 304/1.4301-V2A



POLISHED STAINLESS ST. AISI 304/1.4301-V2A with protective film
bar length 2,7 lm - pack. 15 Pcs - 40,5 lm

Article	h / H mm
PTSPAC 0815	08 / 15
PTSPAC 10125	10 / 12,5
PTSPAC 1530	15 / 30
PTSPAC 2025	20 / 25

CORNER - pack. 10 Pcs

Article	h / H mm
REPTSAC 0815	08 / 15
REPTSAC 10125	10 / 12,5
REPTSAC 1530	15 / 30
REPTSAC 2025	20 / 25

JOINT H 10 - 12,5 - 15 - 20 mm - pack. 10 Pcs

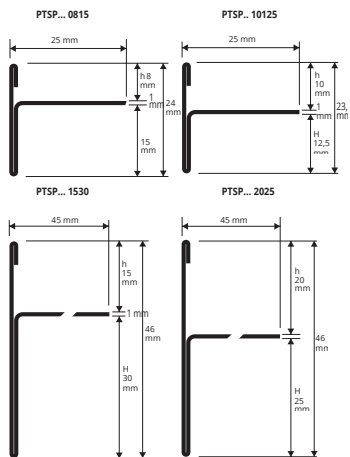
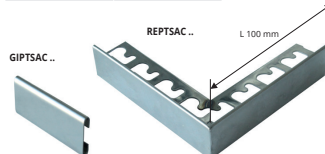
Article	h / H mm
GIPTSAC 0815	08 / 15
GIPTSAC 10125	10 / 12,5
GIPTSAC 1530	15 / 30
GIPTSAC 2025	20 / 25



SATINATED STAINLESS STEEL AISI 304/1.4301-V2A
bar length 2,7 lm - pack. 15 Pcs - 40,5 lm

Article	h / H mm
PTSPACS 0815	08 / 15
PTSPACS 10125	10 / 12,5
PTSPACS 1530	15 / 30
PTSPACS 2025	20 / 25

COLOURS



1. Choose "PROTERMSTEP ACC" according to the tile thickness and desired finish. 2. Cut "PROTERMSTEP ACC" to the desired length. 3. Lay the raiser of the step and apply the adhesive on the support where the profile will be laid. 4. Press the anchoring flange of "PROTERMSTEP ACC" into the adhesive. 5. Lay the tiles aligning them with the profile leaving a 2 mm joint. Remove immediately all remains of adhesive from the surface of the profile. 6. Fill the joints between the profile and the tiles with grout, in order to avoid water stagnation. Remove immediately all the remains of grout from the surface of the profile.

* = On demand, price and delivery time to be agreed.